

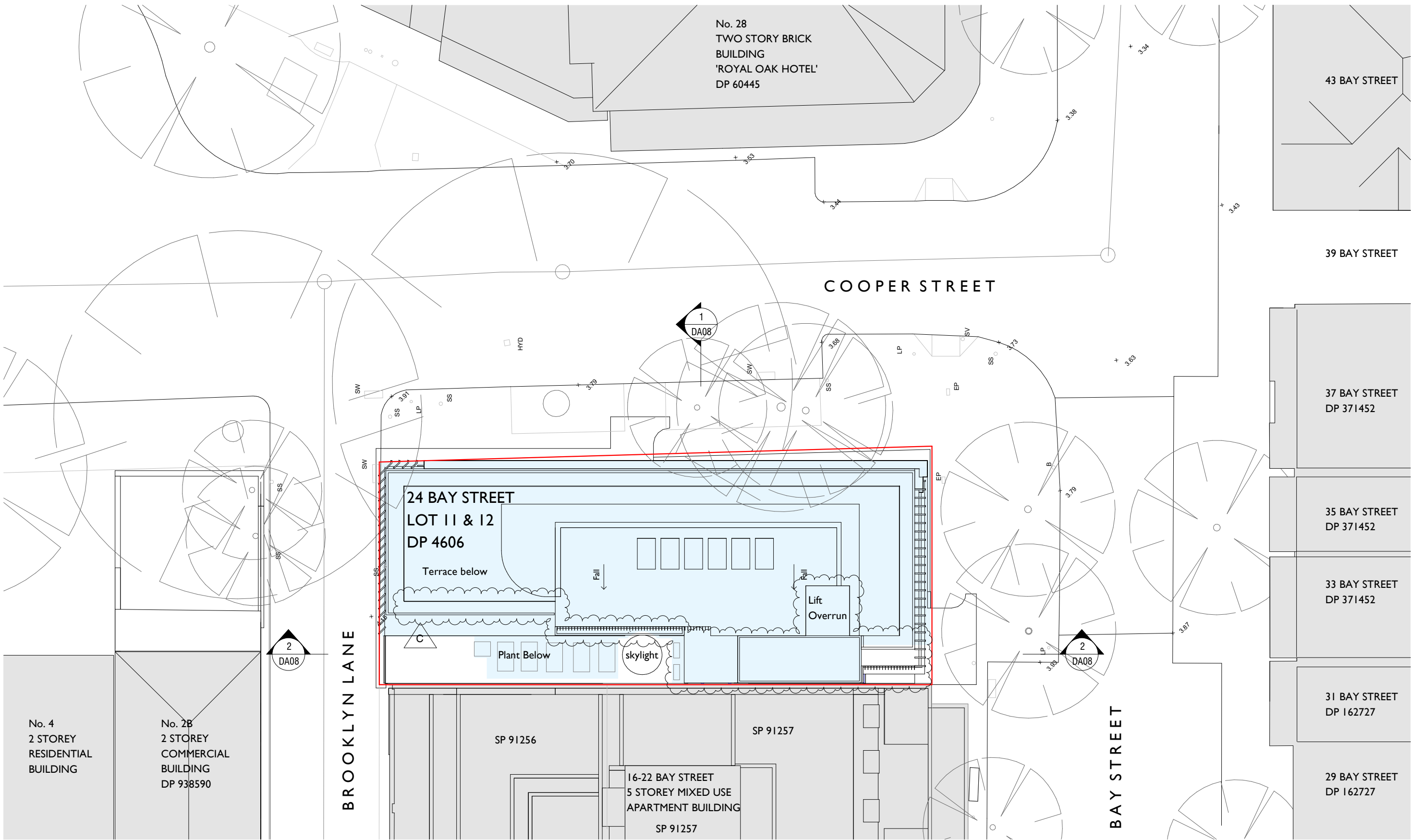
N
AERIAL VIEW

Revision B
- Revised lift location
- Planters added

I LOCATION + SITE ANALYSIS



notes	issue	amendment	date issued	24 BAY STREET, DOUBLE BAY	Lawton Hurley Architecture Interiors Planning Studio 3.03, 30-36 Bay Street Double Bay NSW 2028 T 61 2 9360 5300 info@lawtonhurley.com.au ABN 94 105 274 235 Doug Lawton Architect No 5665	project	PROPOSED REFURBISHMENT	scale 1 : 500 on A3	job no J316	
do not scale off this drawing used figured dimensions only verify dimensions on site resolve discrepancies with architect before proceeding copyright of this drawing remains vested with Lawton Hurley Pty Ltd Doug Lawton Registration No 5665	A	DA SUBMISSION	05.02.21			address	24 BAY STREET, DOUBLE BAY	dwg no	DA01	B
	B	POST S34 REVISIONS	28.09.21			drawing	SITE + CONTEXT			

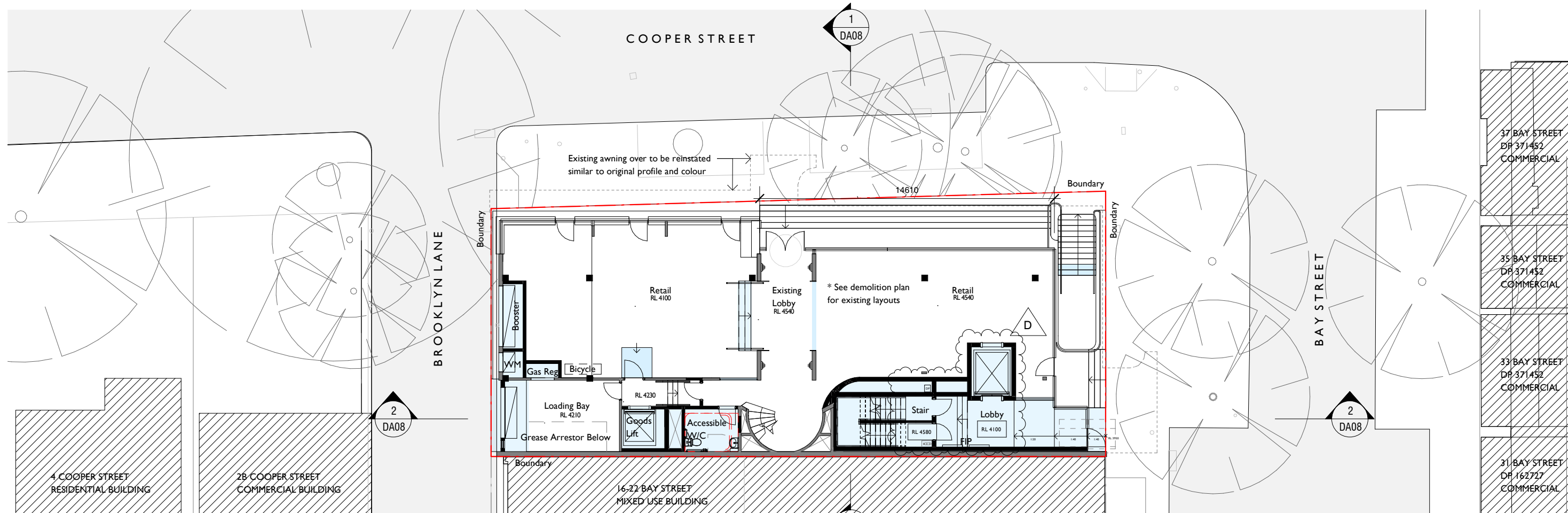


Revision C
- Revised lift location
- Planters added

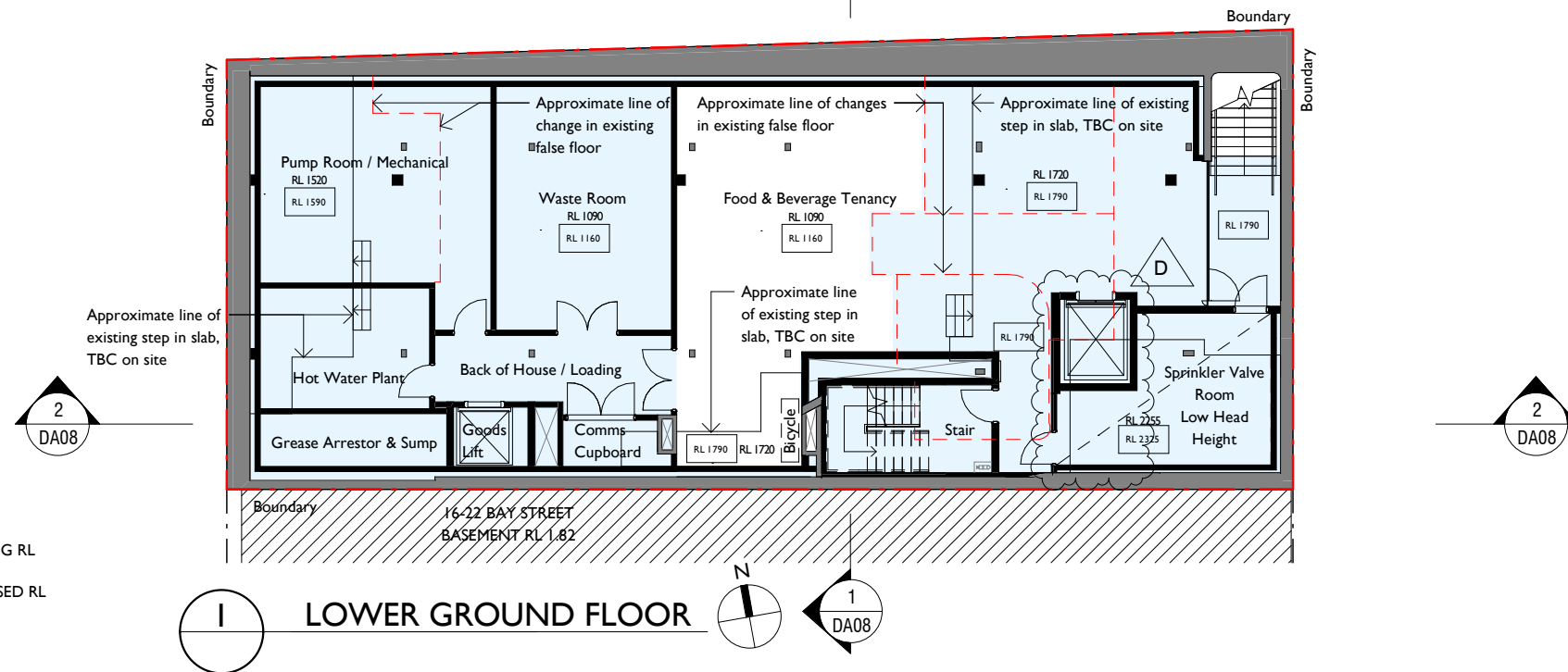
I SITE + ROOF PLAN



notes	issue	amendment	date issued	24 BAY STREET, DOUBLE BAY		Lawton Hurley Architecture Interiors Planning Studio 3.03, 30-36 Bay Street Double Bay NSW 2028 t 61 2 9360 5300 info@lawtonhurley.com.au ABN 94 105 274 235 Doug Lawton Architect No 5665		project	PROPOSED REFURBISHEMENT	scale 1 : 200 on A3	job no J316
do not scale off this drawing used figured dimensions only verify dimensions on site resolve discrepancies with architect before proceeding copyright of this drawing remains vested with Lawton Hurley Pty Ltd Doug Lawton Registration No 5665	A	DA SUBMISSION	05.02.21					address	24 BAY STREET, DOUBLE BAY	dwg no	issue
	B	WITHOUT PREJUDICE	13.08.21					drawing	ROOF PLAN	DA02	C
	C	POST S34 REVISIONS	28.09.21								



2 GROUND FLOOR PLAN



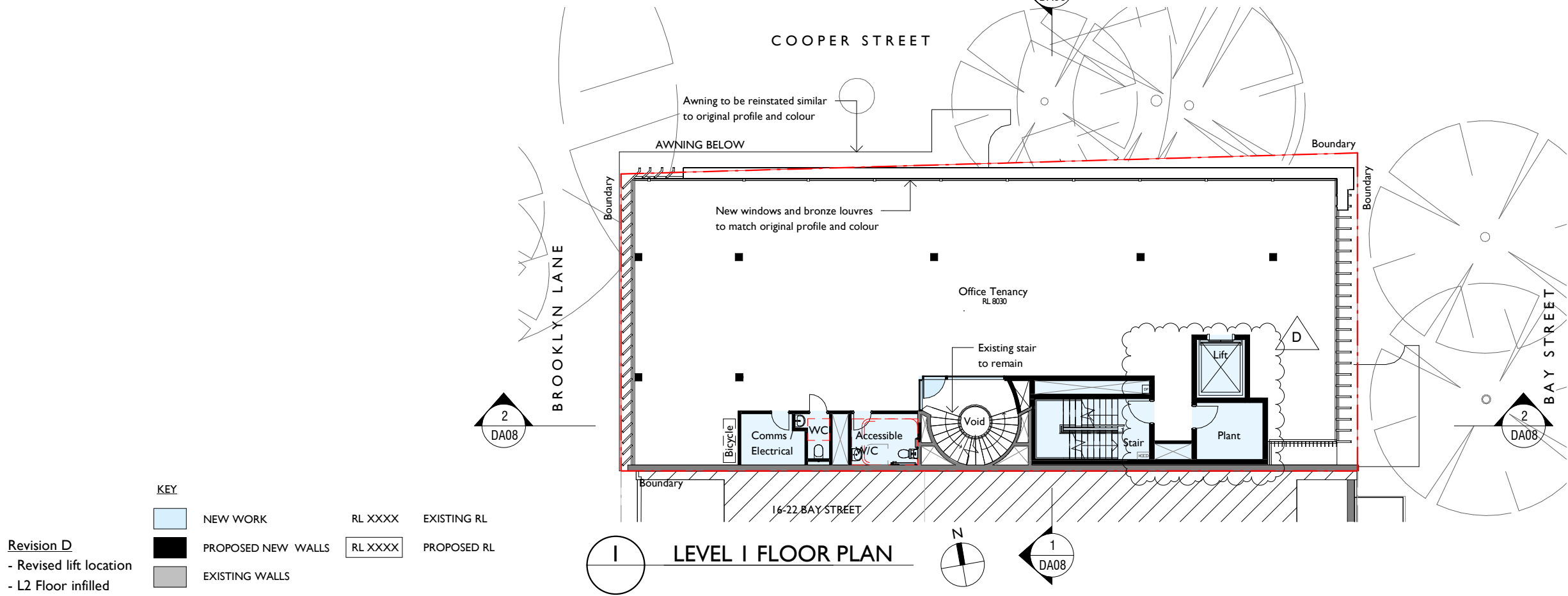
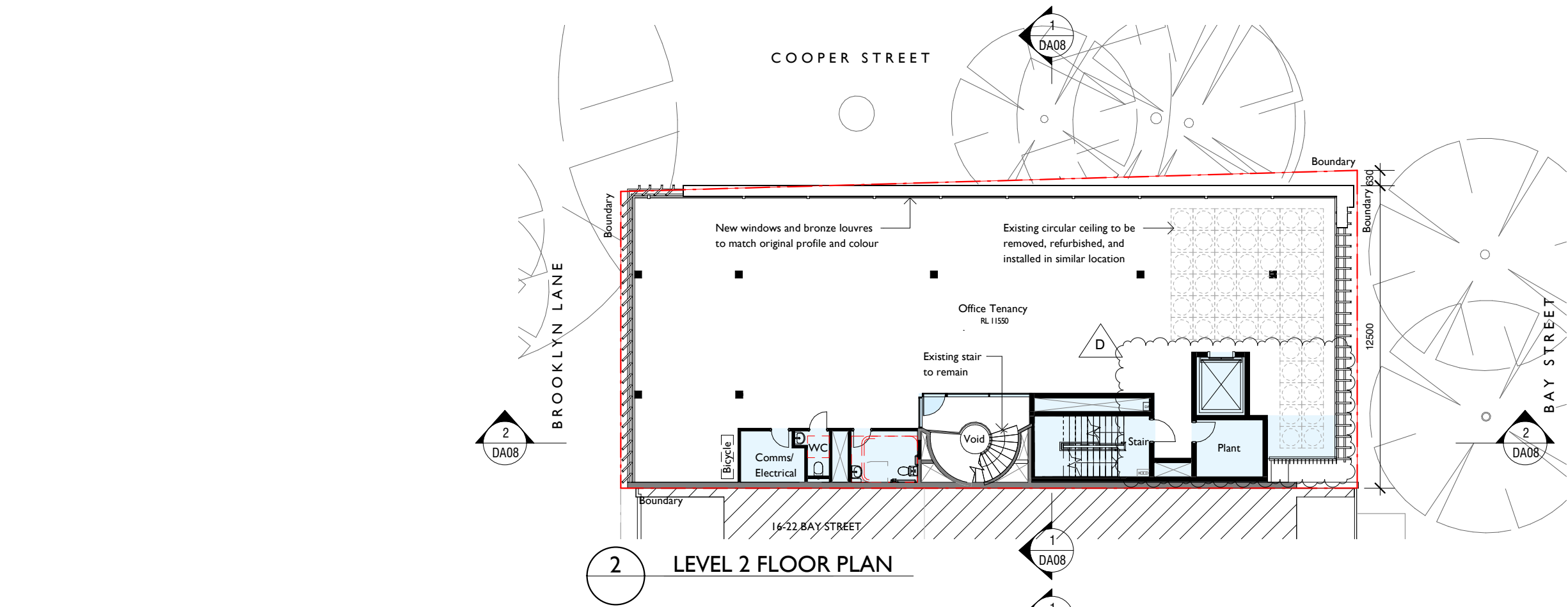
1 LOWER GROUND FLOOR

KEY

	NEW WORK	RL XXXX	EXISTING RL
	PROPOSED NEW WALLS	RL XXXX	PROPOSED RL
	EXISTING WALLS		

Revision D
- Revised lift location

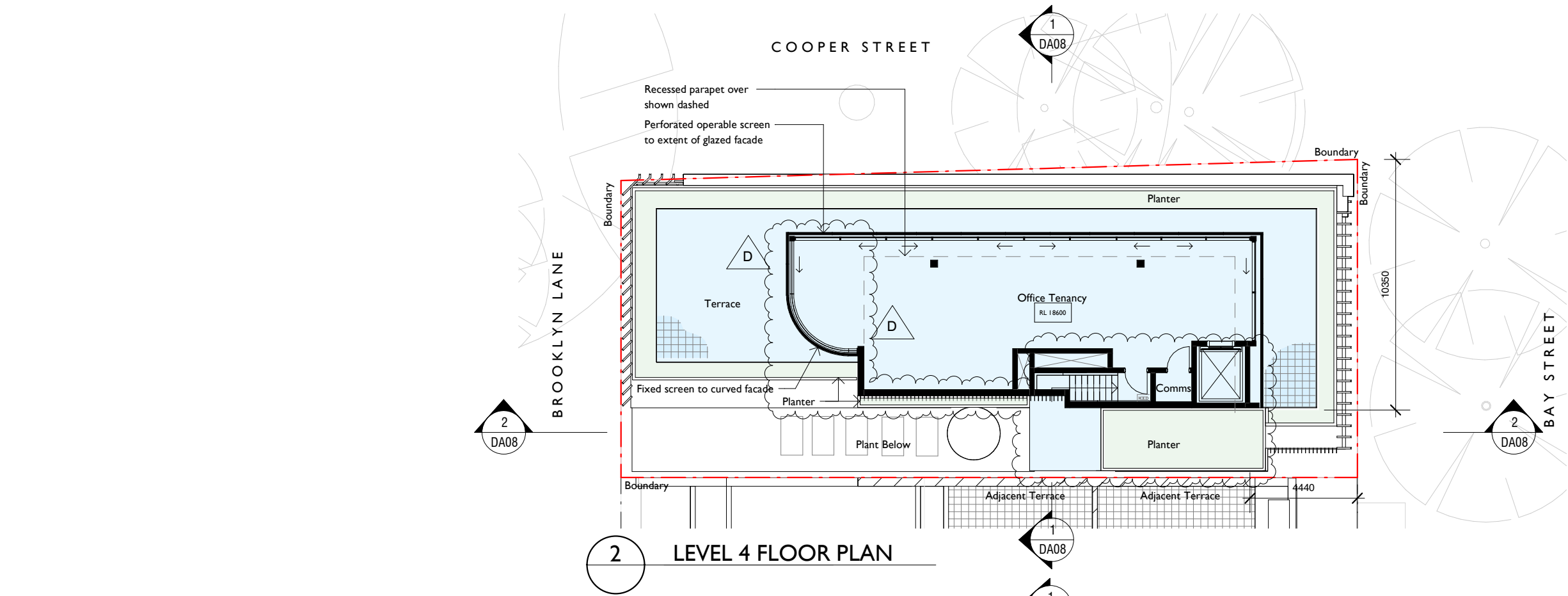
notes	issue	amendment	date issued	24 BAY STREET, DOUBLE BAY		Lawton Hurley Architecture Interiors Planning Studio 3.03, 30-36 Bay Street Double Bay NSW 2028 t 61 2 9360 5300 info@lawtonhurley.com.au ABN 94 105 274 235 Doug Lawton Architect No 5665		project	PROPOSED REFURBISHMENT	scale 1 : 200 on A3	job no J316
do not scale off this drawing used figured dimensions only verify dimensions on site resolve discrepancies with architect before proceeding copyright of this drawing remains vested with Lawton Hurley Pty Ltd Doug Lawton Registration No 5665	A	DA SUBMISSION	05.02.21					address	24 BAY STREET, DOUBLE BAY	dwg no	issue
	B	WITHOUT PREJUDICE	13.08.21								
	C	FOR SECTION 34	20.09.21								
	D	POST S34 REVISIONS	28.09.21					drawing	LOWER GROUND + GROUND FLOOR PLAN	DA03	D



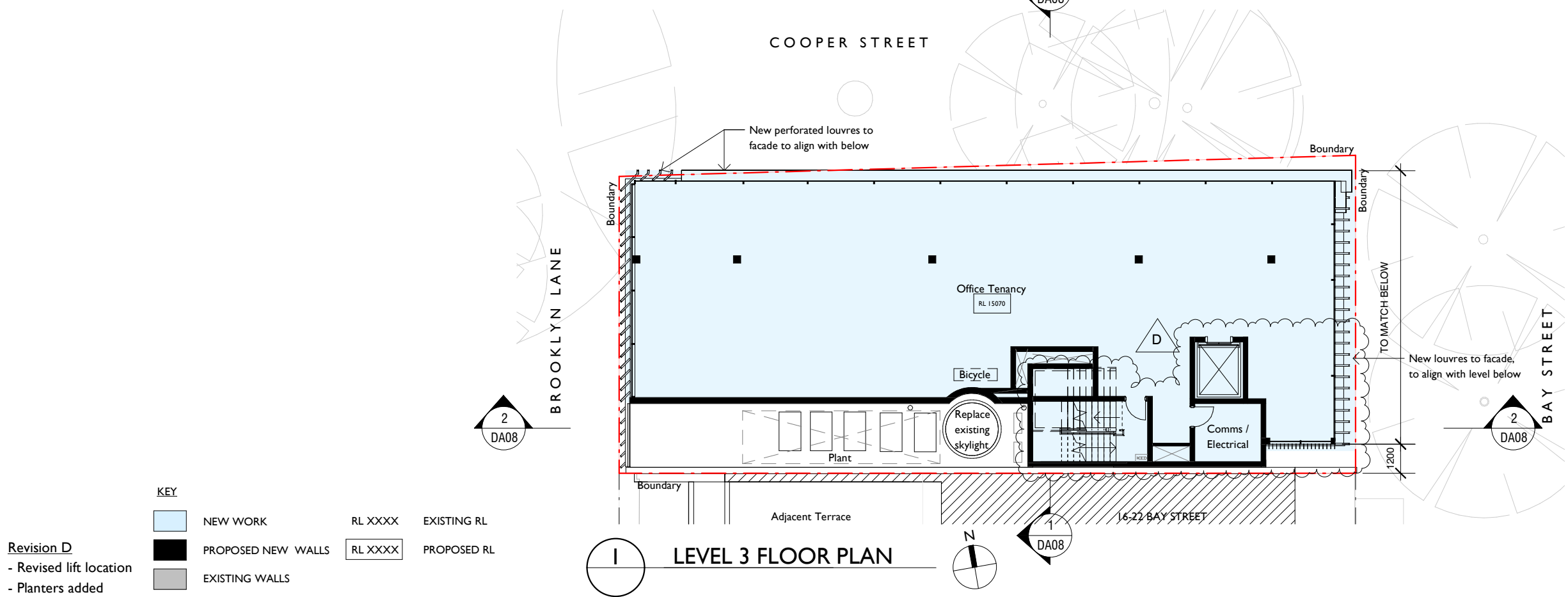
KEY			
	NEW WORK	RL XXXX	EXISTING RL
	PROPOSED NEW WALLS	RL XXXX	PROPOSED RL
	EXISTING WALLS		

Revision D
- Revised lift location
- L2 Floor infilled

notes	issue	amendment	date issued	24 BAY STREET, DOUBLE BAY		Lawton Hurley Architecture Interiors Planning Studio 3.03, 30-36 Bay Street Double Bay NSW 2028 t 61 2 9360 5300 info@lawtonhurley.com.au ABN 94 105 274 235 Doug Lawton Architect No 5665		project	PROPOSED REFURBISHMENT	scale 1 : 200 on A3	job no J316
do not scale off this drawing used figured dimensions only verify dimensions on site resolve discrepancies with architect before proceeding copyright of this drawing remains vested with Lawton Hurley Pty Ltd Doug Lawton Registration No 5665	A	DA SUBMISSION	05.02.21					address	24 BAY STREET, DOUBLE BAY	dwg no	issue
	B	WITHOUT PREJUDICE	13.08.21								
	C	FOR SECTION 34	20.09.21								
	D	POST S34 REVISIONS	28.09.21					drawing	LEVEL 1 + 2 PLANS	DA04	D



2 LEVEL 4 FLOOR PLAN

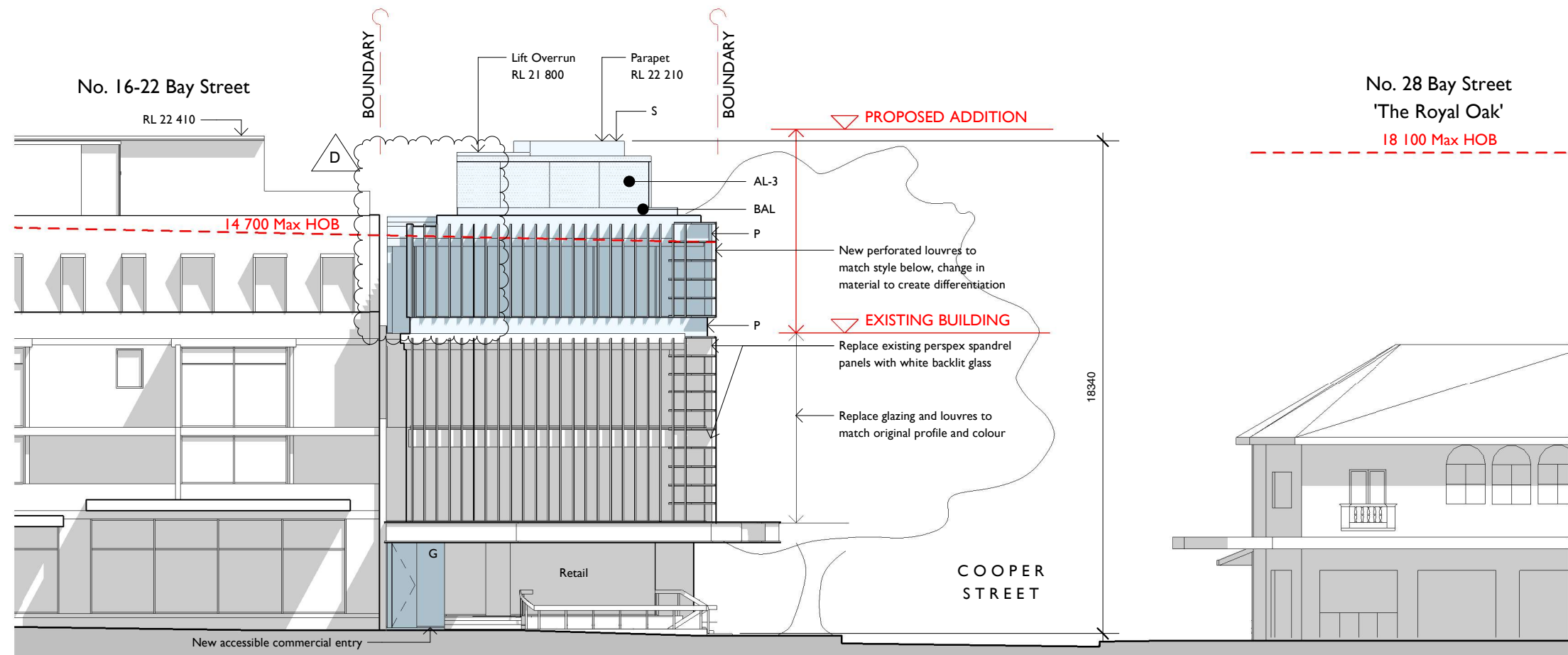


1 LEVEL 3 FLOOR PLAN

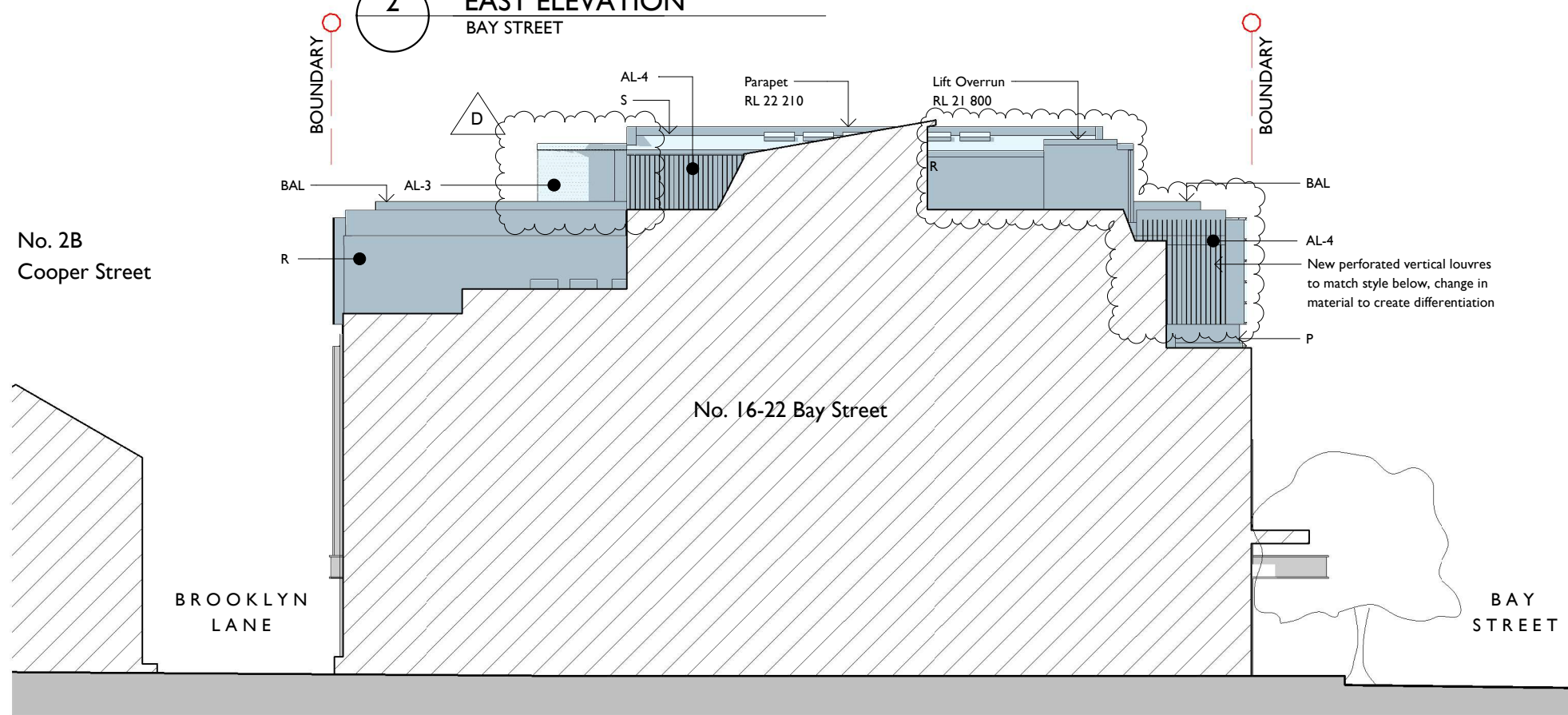
KEY			
	NEW WORK	RL XXXX	EXISTING RL
	PROPOSED NEW WALLS	RL XXXX	PROPOSED RL
	EXISTING WALLS		

Revision D
 - Revised lift location
 - Planters added

notes	issue	amendment	date issued	24 BAY STREET, DOUBLE BAY		Lawton Hurley Architecture Interiors Planning Studio 3.03, 30-36 Bay Street Double Bay NSW 2028 t 61 2 9360 5300 info@lawtonhurley.com.au ABN 94 105 274 235 Doug Lawton Architect No 5665		project	PROPOSED REFURBISHMENT	scale 1 : 200 on A3	job no J316
do not scale off this drawing used figured dimensions only verify dimensions on site resolve discrepancies with architect before proceeding copyright of this drawing remains vested with Lawton Hurley Pty Ltd Doug Lawton Registration No 5665	A	DA SUBMISSION	05.02.21					address	24 BAY STREET, DOUBLE BAY	dwg no	issue
	B	WITHOUT PREJUDICE	13.08.21								
	C	FOR SECTION 34	20.09.21								
	D	POST S34 REVISIONS	28.09.21					drawing	LEVEL 3 + 4 PLANS	DA05	D



2 EAST ELEVATION
BAY STREET



1 SOUTH ELEVATION

FINISHES	
R	RENDER & PAINT : WHITE
P	PAINT FINISH - DARK GREY
AL-1	ALUMINIUM FIN BODY : DARK BRONZE
AL-2	ALUMINIUM FIN DETAIL : BRUSHED STAINLESS STEEL
AL-3	PERFORATED SCREEN : DARK BRONZE or COPPER
AL-4	PERFORATED ALUMINIUM FIN : DARK BRONZE
G	CLEAR GLAZED WINDOWS
BAL	GLASS BALUSTRADE
S	ROOF SHEETING & FLASHING

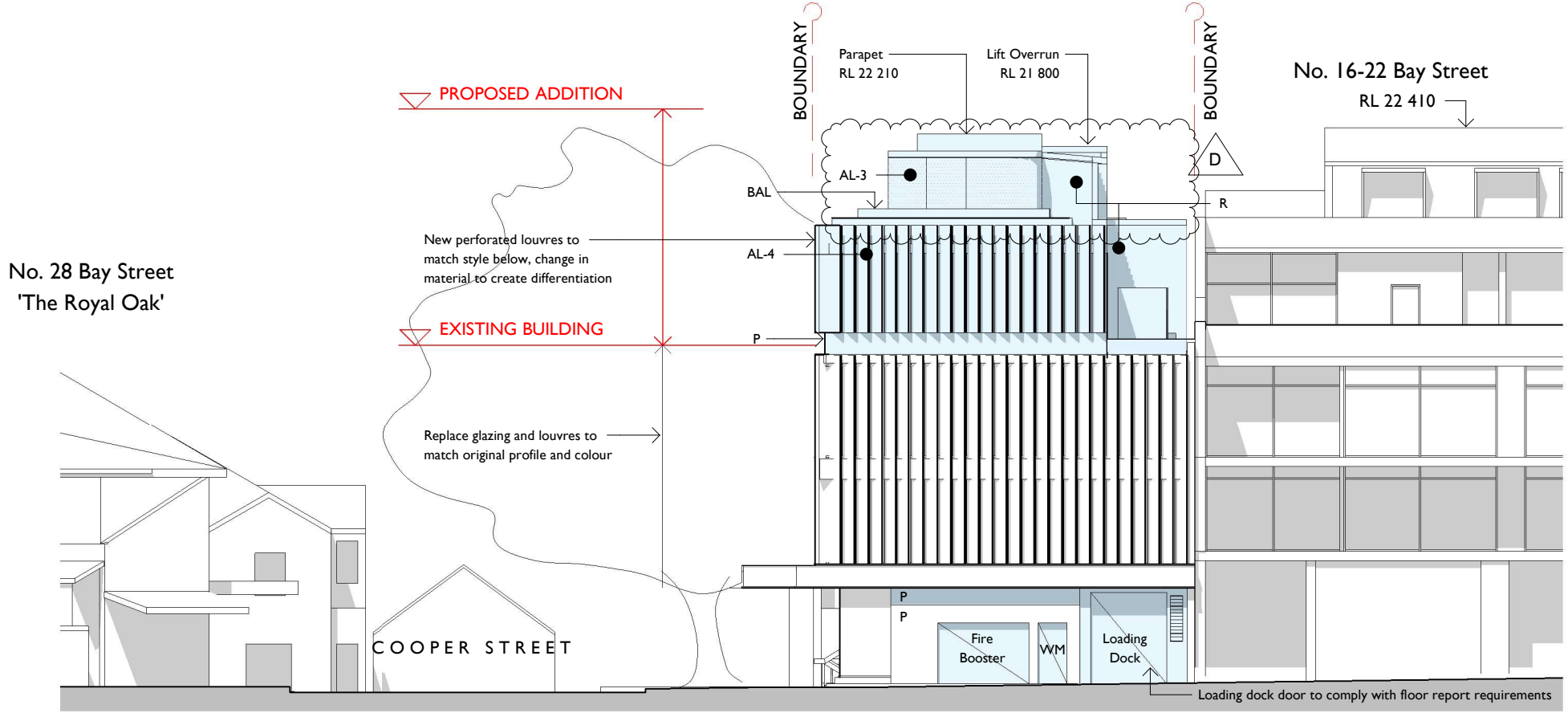
KEY

	NEW WORK
	PROPOSED NEW WALLS
	EXISTING WALLS

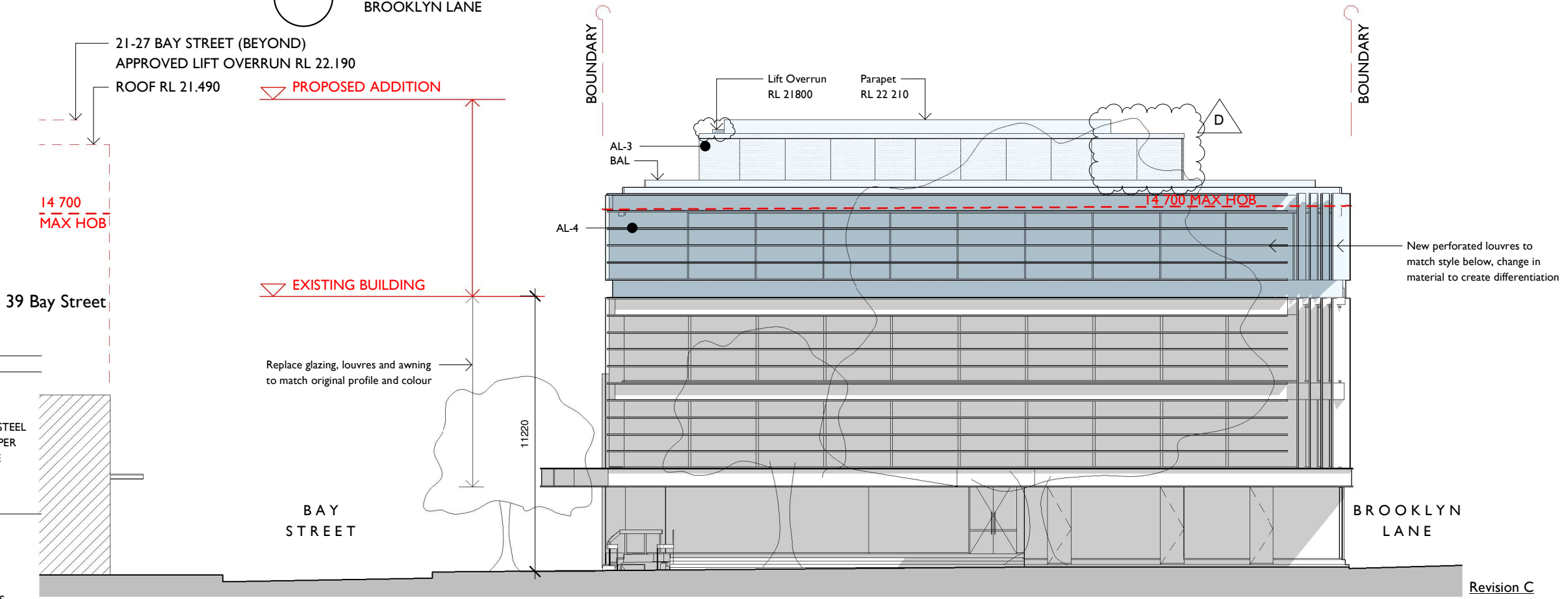
Revision D

- Revised lift location
- Planters added

notes	issue	amendment	date issued	24 BAY STREET, DOUBLE BAY		Lawton Hurley Architecture Interiors Planning Studio 3.03, 30-36 Bay Street Double Bay NSW 2028 T: 61 2 9360 5300 info@lawtonhurley.com.au ABN 94 105 274 235 Doug Lawton Architect No 5665		project	PROPOSED REFURBISHMENT	scale 1 : 200 on A3	job no J316
do not scale off this drawing used figured dimensions only verify dimensions on site resolve discrepancies with architect before proceeding copyright of this drawing remains vested with Lawton Hurley Pty Ltd Doug Lawton Registration No 5665	A	DA SUBMISSION	05.02.21					address	24 BAY STREET, DOUBLE BAY	dwg no	issue
	B	WITHOUT PREJUDICE	13.08.21					drawing	SOUTH + EAST ELEVATIONS	DA06	D
	C	FOR SECTION 34	20.09.21								
	D	POST S34 REVISIONS	28.09.21								



2 WEST ELEVATION
BROOKLYN LANE



1 NORTH ELEVATION
COOPER STREET

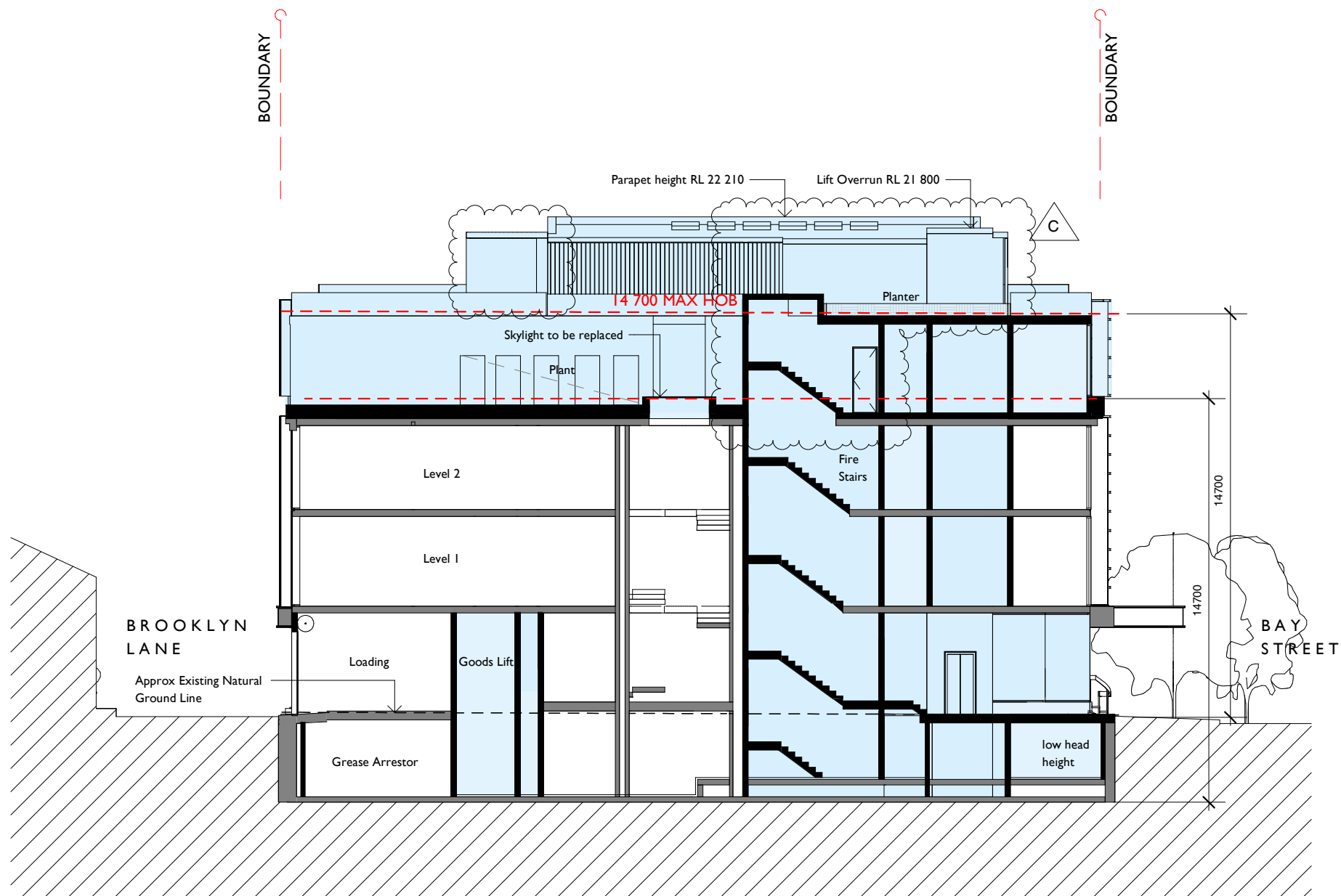
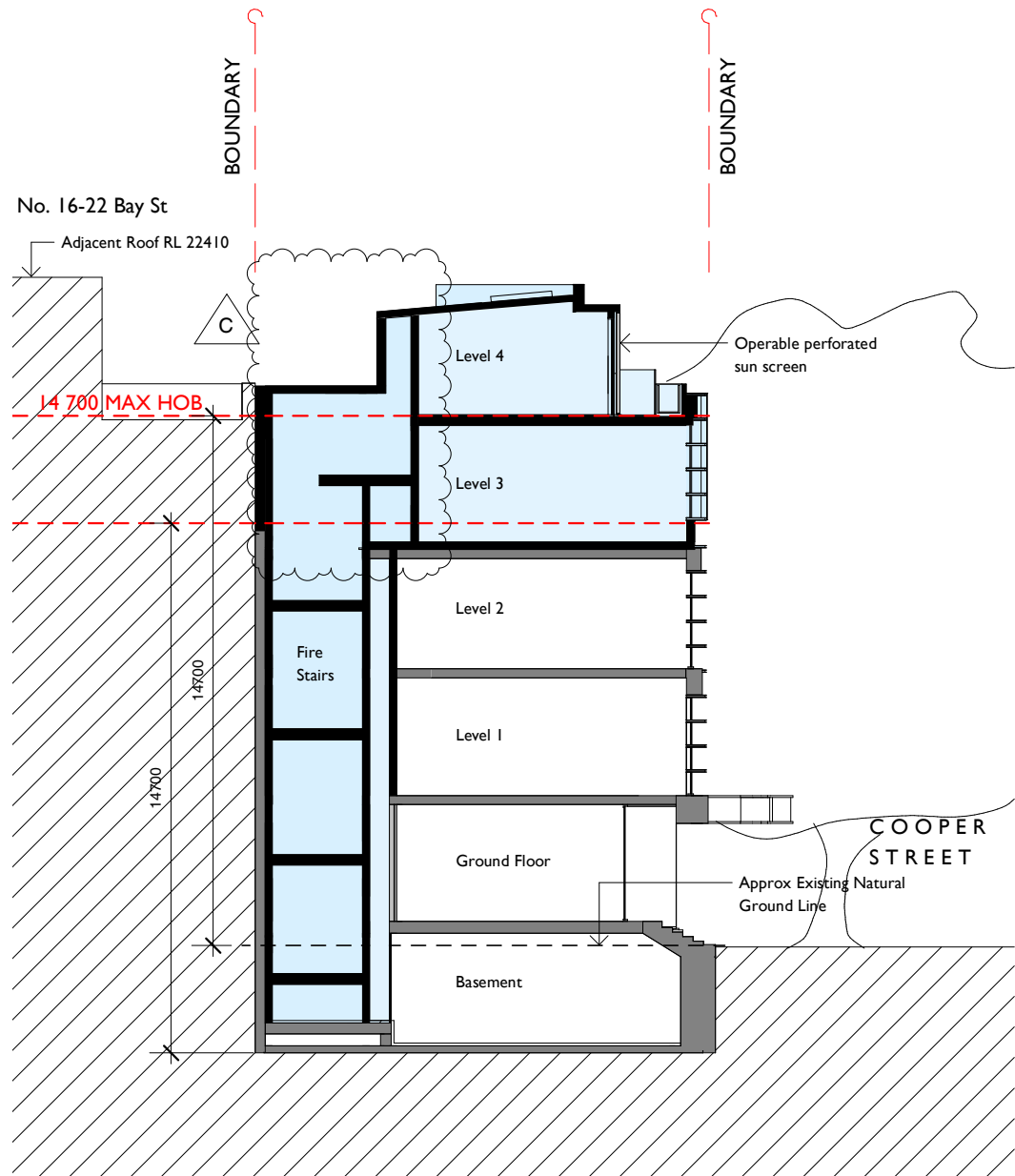
FINISHES	
R	RENDER & PAINT : WHITE
P	PAINT FINISH - DARK GREY
AL-1	ALUMINIUM FIN BODY : DARK BRONZE
AL-2	ALUMINIUM FIN DETAIL : BRUSHED STAINLESS STEEL
AL-3	PERFORATED SCREEN : DARK BRONZE or COPPER
AL-4	PERFORATED ALUMINIUM FIN : DARK BRONZE
G	CLEAR GLAZED WINDOWS
BAL	GLASS BALUSTRADE
S	ROOF SHEETING & FLASHING

KEY

- NEW WORK
- PROPOSED NEW WALLS
- EXISTING WALLS

Revision C
- Revised lift overrun
- Revised parapet detail
- Top level material revised

notes	issue	amendment	date issued	24 BAY STREET, DOUBLE BAY		Lawton Hurley Architecture Interiors Planning Studio 3.03, 30-36 Bay Street Double Bay NSW 2028 t 61 2 9360 5300 info@lawtonhurley.com.au ABN 94 105 274 235 Doug Lawton Architect No 5665		project	PROPOSED REFURBISHMENT	scale 1 : 200 on A3	job no J316
do not scale off this drawing used figured dimensions only verify dimensions on site resolve discrepancies with architect before proceeding copyright of this drawing remains vested with Lawton Hurley Pty Ltd Doug Lawton Registration No 5665	A	DA SUBMISSION	05.02.21					address	24 BAY STREET, DOUBLE BAY	dwg no	issue
	B	WITHOUT PREJUDICE	13.08.21					drawing	NORTH + WEST ELEVATIONS	DA07	D
	C	FOR SECTION 34	20.09.21								
	D	POST S34 REVISIONS	28.09.21								



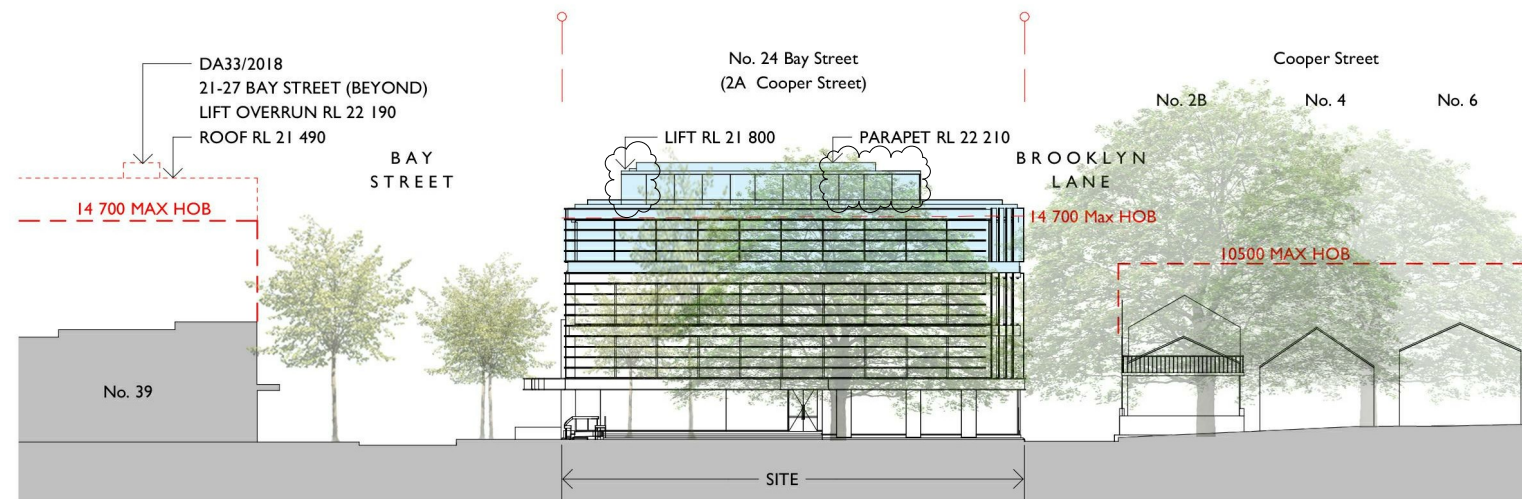
1 BUILDING SECTION
LOOKING WEST

2 BUILDING SECTION
LOOKING NORTH

Revision C
- Revised lift location
- Planters added

KEY	
	NEW WORK
	PROPOSED NEW WALLS
	EXISTING WALLS

notes	issue	amendment	date issued	24 BAY STREET, DOUBLE BAY		project	PROPOSED REFURBISHEMENT	scale 1 : 200 on A3	job no J316
do not scale off this drawing used figured dimensions only verify dimensions on site resolve discrepancies with architect before proceeding copyright of this drawing remains vested with Lawton Hurley Pty Ltd Doug Lawton Registration No 5665	A B C	DA SUBMISSION FOR SECTION 34 POST S34 REVISIONS	05.02.21 20.09.21 28.09.21			Lawton Hurley Architecture Interiors Planning Studio 3.03, 30-36 Bay Street Double Bay NSW 2028 T 61 2 9360 5300 info@lawtonhurley.com.au ABN 94 105 274 235 Doug Lawton Architect No 5665	address 24 BAY STREET, DOUBLE BAY drawing SECTIONS	dwg no DA08	issue C



1 COOPER STREET ELEVATION

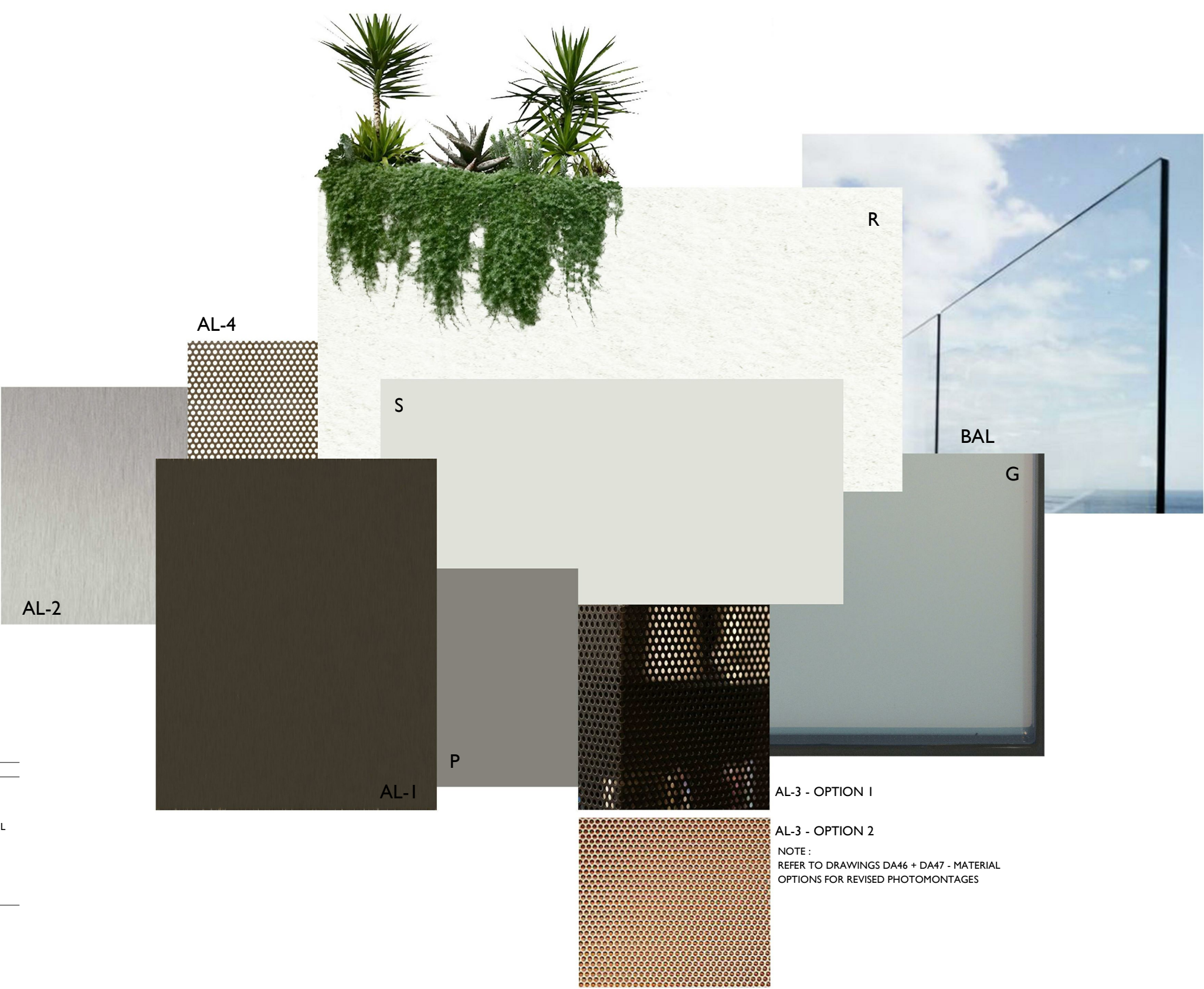


2 BAY STREET ELEVATION

Revision D
- Revised lift location

Revision D
- Revised lift location

notes	issue	amendment	date issued	24 BAY STREET, DOUBLE BAY		project	PROPOSED REFURBISHMENT	scale on A3	job no J316
do not scale off this drawing used figured dimensions only verify dimensions on site resolve discrepancies with architect before proceeding copyright of this drawing remains vested with Lawton Hurley Pty Ltd Doug Lawton Registration No 5665	A	DA SUBMISSION	05.02.21			Lawton Hurley Architecture Interiors Planning	address	DA09	D
	B	WITHOUT PREJUDICE	13.08.21			Studio 3.03, 30-36 Bay Street Double Bay NSW 2028 T 61 2 9360 5300 info@lawtonhurley.com.au	drawing		
	C	FOR SECTION 34	20.09.21			ABN 94 105 274 235 Doug Lawton Architect No 5665			
	D	POST S34 REVISIONS	28.09.21				STREET SECTION		



FINISHES	
R	RENDER & PAINT : WHITE
P	PAINT FINISH - DARK GREY
AL-1	ALUMINIUM FIN BODY : DARK BRONZE
AL-2	ALUMINIUM FIN DETAIL : BRUSHED STAINLESS STEEL
AL-3	PERFORATED SCREEN : DARK BRONZE or COPPER
AL-4	PERFORATED ALUMINIUM FIN : DARK BRONZE
G	CLEAR GLAZED WINDOWS
BAL	GLASS BALUSTRADE
S	ROOF SHEETING & FLASHING : WHITE

AL-3 - OPTION 1

AL-3 - OPTION 2

NOTE :
REFER TO DRAWINGS DA46 + DA47 - MATERIAL
OPTIONS FOR REVISED PHOTOMONTAGES

Revision B
- Revised top screen color

notes	issue	amendment	date issued	24 BAY STREET, DOUBLE BAY		Lawton Hurley Architecture Interiors Planning Studio 3.03, 30-36 Bay Street Double Bay NSW 2028 t 61 2 9360 5300 info@lawtonhurley.com.au ABN 94 105 274 235 Doug Lawton Architect No 5665		project	PROPOSED REFURBISHEMENT	scale on A3	job no J316
do not scale off this drawing used figured dimensions only verify dimensions on site resolve discrepancies with architect before proceeding copyright of this drawing remains vested with Lawton Hurley Pty Ltd Doug Lawton Registration No 5665	A B C	DA SUBMISSION FOR REVIEW FOR SECTION 34	05.02.21 13.09.21 20.09.21					address	24 BAY STREET, DOUBLE BAY	dwg no	issue
								drawing	EXTERNAL FINISHES	DAI7	C